



Illinois Prairie Painters



# Tole 'N Tell

Volume 33, Issue 2

[www.illinoisprairiepainters.org](http://www.illinoisprairiepainters.org)

March-April 2008

*Special points of interest:*

## Message from the President

Vice President

Is spring really just around the corner, one can only hope? I am looking forward to the warm weather and wonderful spring flowers.

Board Contact Info.:

With spring comes the annual conference of the Society of Decorative Painters. This years conference is in Tampa, we have several members attending, if you are feeling up to it, Pam is looking for members to share their class experience with us at the June paint in, see her article for more information.

Financials

A big thanks to Barb Carlson and Marge Coughlin for sharing their talent at the February meeting, with the suitcases for the Women and Children Shelter, the suitcases I saw that day were great. If you took one home to paint be sure bring it back painted to this meeting so Rose can get them to the shelter.

Chapter Minutes

Ways & Means

Education

Our fundraiser for this year is going to be a birds and flowers on a quilt. Peggy Lynn McCarthy has organized the pattern designs we will be using. Please contact her if you have any questions. Pam Boesch will be putting the quilt together for us. The painted squares are due by the April meeting. We will be raffling the quilt at the December meeting. Thank you to all members who took squares to be painted.

Membership

Meeting Info

Sunshine

Our February bag raffle was a great! We raised over \$600.00, with a \$150.00 going to the Decorative Arts Collection. Thank you to everyone who brought items for the raffle and to those who purchased tickets. We will be back to our regular raffle at the April meeting.

Chapter Calendar

Education-

The program for April is watercolor with Jane Drynan. Jane is a hoot to take a class from; she is full of energy and loves what she does. Look for more information in the newsletter.

Sister Chapters

Membership Application

Sign-up for Cheri Rol is good, she will be here April 11, 12, and 13<sup>th</sup> teaching in oils. Call Carol Wiksten if you are interested in coming to the seminar, there is room still available to attend. The color photos of her projects are on our website.



The proposed budget is published in this newsletter, we will be voting on this at the April meeting so please take a minute to look it over, thank you. We have applied for the SDP Foundation Chapter scholarship for this year. It was established to assist chapters and their members to develop and increase their knowledge in decorative painting. Toni Girten has filed all the necessary paper work for the chapter. You can go to the SDP website to read more about it. The maximum awarded is \$1000.00, more than one scholarship can be awarded. They award this scholarship at the conference in Tampa. Thanks to Toni for applying for the chapter.

WINGS & WILDFLOWERS

April 5, 2008

Chapter Meeting

Luncheon and...

Philanthropic -Paint  
Program

Toni Girten has resigned her position as newsletter editor, she swill be staying on as SDP Liason. Janet Schipma is our newsletter editor. The board wishes their best to Toni and welcomes Janet!

So for the April meeting bring your painted suitcase, quilt square, wind chime for the April exchange and your watercolor brushes for the program. Canned food items for the food pantry at the church will get you a book from vintage books, let's see if we can help to fill those shelves. See you then.

I want to say congratulations again to Gai and John Moodie on becoming American citizens on January 24<sup>th</sup>!

Lora

### Vice President

Well I'm totally amazed! Thank you for all your thoughtfulness and talents. I cannot believe how many of our members participated in the bag raffle. The proceeds went to raffle and \$150.00 will be sent to D. A. C. for our annual donation. We had approximately 17 members stay and paint suitcases for our philanthropic project. We handed out a total of 28 suitcases out to be painted.

At our February meeting we handed out material and patterns for our next fundraiser project. We will be making a hand painted quilt. We are hoping that we can get all the squares (birds and flowers) back by the April meeting so that I can then get started in the process of picking out materials and making the quilt. I will try to have it made and have the tickets and pictures ready to hand out at our October meeting. The cost of the raffle tickets have not been decided on as of yet.

Our April program will be taught by Jane Drynan. She will be teaching a watercolor. It will be done on watercolor card stock. As of today she is trying to get the paint and watercolor cards donated. So just bring you usual watercolor supplies. If she is not able to get the donation I will e-mail or send the information to each attendee before the meeting.

This year our April 5<sup>th</sup> exchange will be hand painted wind chimes. These can be any type (metal, wood, etc.). I purchased wood bird-house wind chimes from the Artist club. They were 3 for \$9.99.

I'm looking for 2 of our members to teach at our June 7<sup>th</sup> meeting, pieces from our National Conference. Please sign up with me today. Also keep in mind to get permission from the teacher to use her class. As of today I have one member that has already said she would be happy to teach a class. If you have any questions about this Please e-mail me [amboesch@sbcglobal.net](mailto:amboesch@sbcglobal.net).



And remember that our annual art competition will be at our October meeting. So don't forget to start painting! We would love to see many items submitted this year.

### Chapter Display

For the April meeting, our theme is Wings & Wildflowers. Please bring a piece for our display. It can be birds, butterflies, bugs (anything with wings) or flowers of just about any kind.

You will receive a coupon good for a free raffle ticket when you bring a piece to share with us!

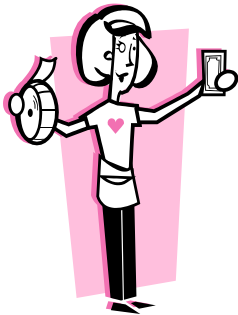
Thank you & See you at the meeting!

Robin Richer

**Treasurer's Report as of 2/18/08**

Total Income Current Period	\$788.00
Total Expense Current Period	\$4,030.68
Year to Date Income	\$788.00
Year to Date Expense	\$4,030.68
Balance in Checking 2/02/08	\$12,859.79
Balance in Investments	\$13,398.38
Total Accounts	\$26,258.17

**Submitted by**  
**Bobbie L'Heureux, Treasurer**

**At the April Meeting ...****Email Newsletter Drawing 2008 — "FREE SEMINAR"**

For those member who have signed up to receive their IPP Newsletter via email, a drawing will be held at the April Meeting — the prize for the lucky recipient will be a 'free seminar'. Good Luck to all you emailers!

A great big THANK YOU to Toni Girten who due to her cost-saving efforts on the newsletter has made this drawing and prize possible. Great job, Toni!

**Newsletter**

Please continue to send your photos via email or a disk. Newsletter articles are due the Friday after every board meeting.

Thank you.

Janet Schipma, Newsletter Editor  
 janet.schipma@sigmachi.org





**IPP General Meeting**  
**February 2, 2008**  
**Lyonsville Congregational Church**  
**Indian Head Park, IL**



Called to order at 10:07 a.m. by Lora Haberstroh

- President:** Lora Haberstroh thanked to all for coming. Flowers were presented to Gai Moodie because she became a citizen of the United States.
- Vice President:** Pam Boesch reviewed the philanthropic project for today -- Marge Coughlin and Barb Carlson will teach the suitcase painting. At the April meeting, Jane Drynan will teach a sunflower watercolor. She is trying to get the paints and paper donated. October will be the competition. For the June meeting, we need 2 people to volunteer to teach convention pieces. If you are willing to teach, please let Pam know. For the April exchange we are debating between Easter eggs or candlesticks.
- Treasurer:** Bobbie L'Heureux distributed the year-end report to all – as of year end 2007, checking account balance was \$12,470.68, AG Edwards account balance was \$13,809.20, for a total of \$26,279.88. Let Bobbi know if you have any comments or questions. YTD 2008, income was \$788, expenses were \$4030.68. Balance in checking is \$12,859.79 and in the AG Edwards account is \$13398.38 for a total of \$26,258.17.
- Secretary:** Julie D'Souza advised there were no corrections or additions to the December 1<sup>st</sup> General Meeting minutes. A motion to accept the minutes as written was made by Marge Vargas and Alberta Overocker seconded it. Minutes will be filed as written.
- Chapter Display:** Robin Richer announced that many pieces were brought today for the Chapter Display. Marilyn Ropp, Gai Moodie, Carol Wiksten, Linda Oelrich, Janet Weber, Helga Schulz, Rose Schulz, and Lora Haberstroh all brought in items. Delores Chervenak provided an item she won in a special raffle years ago done by Aileen Bratton. Lora Haberstroh did all the centerpieces. April theme is Wings and Wildflowers.
- Education:** Carol Wiksten/ Margaret Royston reported that the Gretchen Cagle seminar went well. 32 students signed up, there were 18 students for Friday, 26 for Saturday, and 25 for Sunday. Expenses were \$2699.27, income \$2275.00, resulting in a loss of \$424.27. Thank you for all the helped Carol at the Gretchen seminar. Next seminar is Cheri Rol Apr 11 – 13 for oils. Don't wear perfume, she is allergic to it. Friday is a beginner class, Saturday is beginner/intermediate, and Sunday is advanced. If not enough sign-ups, we will have to cancel. It will be held here in the church. If any questions, please call either Carol or Margaret.
- Membership** Bettie Slazyk reported that 107 members signed up this year, last year there were 136. See Bettie for your new Directory and membership card!
- Hospitality:** Darlene Durkovic/ Gail Piazza reported 53 members signed up for today's meeting, 2 no shows. 2 guests, Joan Dunlap guest of Linda Olrich, Myrtle guest of Dorothy. Today Bobbi made desserts, Lora made centerpieces. Names were called for those who won the centerpieces and the 3 little goody bags in the back.
- Newsletter:** Toni Girten – Absent. Lora reported that Toni is doing her best to get the newsletter out in a timely fashion, however many articles were not received on time. Linda Molitor is working with our web host manager to get the newsletter back on line.

- Ways and Means:** Peggy Lynn McCarthy announced that necklaces are for sale at the table. Peggy Lynn is taking orders for Turntable easels. Pam Boesch is our embroidery person now – you can bring in what you want embroidered.
- Publicity:** Linda Molitor – Absent
- Parliamentarian:** Judie McComb said, “We’re good”.
- Library:** Gai Moodie/Nancy Swingle mentioned books and videos are available for loan. For those that have items outstanding, we have your deposit checks which we can cash if you choose to not bring the items back.
- Philanthropic:** Rose Schulz announced we will be painting suitcases today for the Battered Women’s Shelter for the women and children. We are still collecting baby blankets for infants in the neonatal units (18X18). We are still collecting Pop tops for the Ronald McDonald house. Ronni Benedetti is still collecting Ink cartridges for the cat house shelter. Quilt made at Octoberfest and was raffled off - \$110 donated to Y Me – got response. Pam Boesch told us about the next major philanthropic project - hand painted squares for a quilt. Pam will sew the quilt. Peggy Lynn has the pictures of birds and flowers to choose from. The pictures need to be done on diagonal. Come over and get material and determine bird or flower you want to do. They will email book if you need directions. Need squares done by the April meeting. In Dec. we collected \$200 for Ronald McDonald and we got a thank you letter. We ended up buying 4 ornaments, one at each Ronald McDonald house.
- Raffle:** Sue Wesley/Marge Vargas thanked all who brought things in for the bag raffle. \$595 Has been collected today so far.
- Traveling Display:** Fran Gilkerson - Absent
- Vintage Books:** Sandy Panozzo/Marge Rios distributed coupons to all for a free book. \$26.10 Taken in today at 10 cents a book. Don’t forget to bring in canned goods for the church pantry.
- Historian:** Luella Rooney requested if anyone has taken pictures at our meetings and get-togethers, please forward them to Luella. Any articles of our members receiving recognition, please bring a copy for Luella.
- Sunshine:** Norma Rappelt had nothing to report. Sorry if I missed your birthday in January.
- Relief Crew:** Sandy Dreher - Good on relief.
- Oc’tole’berfest:** Colleen Lehman announced that she is ready to get going, anyone who wants to help, let Colleen know. If you have any suggestions for projects, contact Colleen by the April meeting. This year it will be held at the Hyatt where it was last year and is Oct 24 – 26.
- Old Business:** Item found in bag – may be someone’s gift or raffle prize – please take a look and see if it’s yours.
- New Business:** None
- Announcements:** Norma Rappelt has an electric kiln for sale, contact her for more information.
- Sandy told us that the Longaberger basket covers are back. The money collected from the sale of the lids is donated to Horizon of Hope, a breast cancer organization. They have an annual luncheon at Drury Lane.
- Marge Coughlin is a teacher at the Visual Arts Center in Tinley Park. Friday, February 15<sup>th</sup> there will be a reception there showing her student’s and her art work. Please come and see all the artwork, there should be about 80 paintings.
- Motion to Adjourn:** At 10:46 by Sandy Dreher seconded by Irene Schranz

## Education

Our next seminar is with Cheri Rol who also teaches in oils. Cost is \$40.00 a day which includes a five dollar palette fee. The classes are as follows:

Friday, April 11 is a beginner oil- a beautiful Yellow Rose. This is a great class for inexperienced oil painters but also good for those who just enjoy oil painting. The surface is a 9 x 12 masonite.

Saturday, April 12 is Sweet Peas and Grapes. Cheri calls this a beginner/ intermediate class. This would be a great class for a first or second time oil painter who just wants to learn more about painting different items in oils. The surface is a 8 x 10 masonite.

Sunday, April 13 is called Shiny Stuff-Glass. Cheri calls this an intermediate/ advanced class. This is a great class for those who want to learn how to paint glass. The surface is a 5 x 10 masonite panel.

All the oils require very little prep work- how great is that.

REMEMBER: LUNCH IS ON YOUR OWN.

If you wish to sign up for any of the classes please email either Carol Wiksten at [clwdale@aol.com](mailto:clwdale@aol.com) or call Margaret Royston at [royst103@sbcglobal.net](mailto:royst103@sbcglobal.net) and be sure to type in IPP seminars so we won't delete your e-mail. We hope to see you at the seminars. There is always lots to learn from these great teachers so you won't want to miss out.

If you wish to join us for dinner, please call Carol or Margaret so we can make dinner reservations. This is a great time to get to know these distinguished teachers and a great way for them to get to know us.



**MEMBERSHIP 2008**

Hi Members,

Welcome to our new season at IPP. Thank you to Ronni Benedetti for having our directories printed and in time for our February meeting. Great job, thanks again Ronni.

Directories were handed out at our February meeting and the two-year 2008-2009 calendars were handed out at our Christmas Party. We currently have 109 members and two businesses that have renewed their membership.

Please make the following corrections to your 2008 Directories:

Jan Baier – spelling - last name under IPP Teachers List (do not delete)

Jane Drynan – e- mail - janerondrynan@gmail.com

Fran Gilkerson – phone - 815-836-8888 (under Traveling Display only)

Phyllis Kennedy – phone - 630-257-3538

Theresa Krohn – phone - 219-730-5336

Robin Richer – spelling - last name (under Chapter Display/Standing Committee only)

I have already included two additions to the back of your 2008 directories, Roberta Helsom and Elizabeth Troyer, and now here are two more to be added:

Georgia Wanda  
14938 S. Millard  
Midlothian, IL. 60445  
708-539-1561 1/9 S T  
gkwanda@aol.com

Donna Brunner  
One Briarwood Ln.  
Indian Head Park, IL. 60525  
708-246-2748 10/31 S

**SDP MEMBERSHIP FOR 2009**

Since this is the beginning of the year it would be a good time to begin thinking about getting a discount on your SDP dues for 2009. You received this information from SDP with your 2008 membership card. Simply add your name and membership number to the coupons printed on the back of the forms they sent you. Next, talk to your friends about all the great benefits SDP has to offer, and when your friends join SDP for 2008, ask them to include your coupon with their membership form. You'll receive \$4.00 off your own 2009 renewal for each "NEW" member you recruit that includes one of your coupons with their completed membership form. Good for up to \$40...a free individual membership. (If you are already a 2009 member the discount will apply to 2010.)

Bettie Slazyk, Membership Chair  
eslazyk@cs.com or 219-972-9439

## HISTORIAN

I will be your new Historian this year and would appreciate any photo's you could give me from our December 2007 meeting, including installation of officers; photo's of our Prairie Pride Award Member; any other articles and 2008 Seminars for our scrapbook.

Thanks for any help you can give me.

Luella Rooney

## Ways and Means

Hello Ladies! The February meeting was quite a busy one. I did end up selling \$213.00 which included the total that I sold at the seminar. No one hides from me, I am everywhere! Please come to the table at the April meeting and check out the watches and necklaces that were purchased at the Jewelry Show in January. Also, Judy McComb donated some brushes and I only have one left. Bobbie L'Heureux donated luggage which will sell for \$15.00. I am offering to paint on them for an additional \$25.00 if you want them personalized. Pam Boesch made a book of embroidery samples that you can have put on a shirt, bag etc.

So, check it out!!!! See you in April — Thank you for your support.

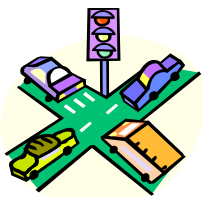
Peggy Lynn McCarthy

## Library

Ladies, if you are looking for help with you stroke work -- we have a DVD to help you. If you are wanting to try a new watercolor technique - we have many books to give you some fresh ideas. If you did not complete your project with Gretchen Cable (or any previous seminar teacher) -- we have her class work sheets to help you get the job done.

We have it all!!!! So stop by the bookmobile and be inspired.

Nancy and Gai, the IPP Library gals.



## Traveling Display for 2008

Our display will be at the Homer Township Library in March and April.. Happy Spring to all.

**Fran Gilkerson-Chair**



## Raffle

Wow! The bag raffle in February brought in \$642 for the organization. Thanks to everyone that participated. A special thank you to the following members who contributed multiple pieces for the raffle we thank you for your generosity and talent:

Lora Haberstroh, Pam Boesch, Sue Wesley, Gai Moodie, Peggy McCarthy, Marilyn Ropp, Pat Esser, Judy McComb, Sandy Dreher, Marge Coughlin, Irene Schranz, Bobbie L'Heureaux, Janet Weber, Nancy Simpson, Barb Loehman, Alberta Overocker, Cathy Plomb, Mary Domanus, Nancy Swingle, Dolores Chervenak, Camille Anzelmo, Gail Piazza, Dorothy Een, Robin Richer, Linda Oelrich, Rose Schulz and Helga Schulz.

Again, thank you and keep those brushes busy for our next Bag Raffle.

Marge and I would also like to thank Barb Carlson and Sandy Dreher for their help setting up the many wonderful pieces that were in the raffle.

April will bring back our regular raffle. So look around for those items that you would like to donate to raffle.

Sue Wesley



### Sunshine

Norma Rappelt ([nrappelt@sbcglobal.net](mailto:nrappelt@sbcglobal.net))

#### March Birthdays

Titiana Anikocich  
 Ronni Benedetti  
 Sandy Glowinke  
 Judi Lock  
 Verna Maurice  
 Norma Rappelt  
 Robin Richer  
 Joan Stelle  
 Billie Stier  
 Maxine Wallisch  
 Alex Salnikov  
 Leona Kelly

#### April Birthdays

Judy Buczkiewicz  
 Kathy Crow  
 June Dryman  
 Lora Haberstroh  
 Margaret Rios  
 Helga Schulz  
 Jo Ann Van Gerpen  
 Mary Ann Wilkison  
 Collen Lehman

**HAPPY BIRTHDAY TO ALL FROM THE SUNSHINE LADY!!!  
 NORMA RAPPELT**

# Vintage Books

Spring is finally on it's way. I don't know about you but I couldn't wait for warmer weather.

We did very well at the February meeting. We sold \$46.20 worth of books. At 10 cents each that's a lot of books. Thanks to all who bought more than their share.

Everyone who attended the meeting received a coupon for a free book. We hope you enjoyed the book you picked out. You can get another free book at the next meeting if you bring in a can good for the church pantry. If you want more than one free book bring in more cans.

Sandy Panozzo and Marge Rios



## Thank You



I want to thank Lora for the beautiful red, white and blue patriotic bouquet she presented to me at the February meeting, I appreciated this very much.

The occasion? I, with my husband, John and my youngest daughter, Laurin, can no longer be called "resident aliens." As of early this year, we are proud to be Americans !!

Many thanks for the warm welcome I received from so many of my IPP friends.

Thanks again, Gai

## Thank you From Mary Domanus

To all the IPP members: Thank you for the cards and prayers received when my brother passed away. Mary Domanus

<p><b><u>General Meetings</u></b></p> <p>Are held at the Lyonsville Congregational Church 6871 Joliet Road Indian Head Park, IL 60525</p>	<p style="text-align: center;">We are on the Web!</p> <p style="text-align: center;"><i>The Illinois Prairie Painters' Chapter was formed in 1975, to pursue the Goals of the national organization on a local level. The Chapter is designed for students, teachers, and friends of the art of tole and decorative painting.</i></p>	<p><b><u>Board Meetings</u></b></p> <p>Lemont Public Library 6:30 PM 50 E. Wend Street Lemont, IL 60439</p>
---	---	---

## 2008 Calendar of Events - Illinois Prairie Painters

General Meeting –4/5	Board Meeting-Cookout-Pam's House-8/18
Board Meeting-4/21-Lemont Library	Lynne Deptula Seminar-9/12-9/14
Cheri Rol Seminar—4/11-4/13	Oc'tole'berfest –
SDP Conference-Tampa-5/16-31	General Meeting-10/4
General Meeting-6/14	Board Meeting-10/6
Board Meeting-6/16-Lemont Library	General/Holiday Meeting-12/6
HOOT Convention-8/11-8-16	Combined Board Meeting-12/15-Pizza Party

### IPP Committee Chairs—Contact Information—2008

<u>COMMITTEE CHAIRS</u>	<u>LAST NAME</u>	<u>FIRST NAME</u>	<u>EMAIL ADDRESS</u>
<u>CHAPTER DISPLAY</u>	RICHER	ROBIN	<a href="mailto:tinybird503@hotmail.com">tinybird503@hotmail.com</a>
<u>CONFERENCE AUCTION</u>	OPEN	OPEN	N/A
<u>EDUCATION- CHAIR</u>	WIKSTEN	CAROL	<a href="mailto:lmh4ipp@aol.com">lmh4ipp@aol.com</a>
<u>EDUCATION-OTHER CHAPTERS</u>	*	*	*
OLD MILL	STEFANIK	DONNA	<a href="mailto:donnamarie001@msn.com">donnamarie001@msn.com</a>
SOUTH SIDE BRUSHES	URBAN	BARB	<a href="mailto:barbaracurban@hotmail.com">barbaracurban@hotmail.com</a>
WINDY BRUSHES	CARBONARA	DOROTHY	<a href="mailto:dorpaints@sbcglobal.net">dorpaints@sbcglobal.net</a>
<u>HISTORIAN</u>	ROONEY	LUELLA	*
<u>HOSPITALITY</u>	DURKOVIC	DARLENE	<a href="mailto:dardee939@sbcglobal.net">dardee939@sbcglobal.net</a>
<u>LIBRARY CO-CHAIR</u>	MOODIE	GAI	<a href="mailto:gmoodie@ncusd203.org">gmoodie@ncusd203.org</a>
<u>LIBRARY CO-CHAIR</u>	SWINGLE	NANCY	<a href="mailto:dswingle@core.com">dswingle@core.com</a>
<u>MEMBERSHIP</u>	SLAZYK	BETTIE	<a href="mailto:eslazyk@cs.com">eslazyk@cs.com</a>
<u>NEWSLETTER</u>	SCHIPMA	JANET	<a href="mailto:janet.schipma@sigmachi.org">janet.schipma@sigmachi.org</a>
<u>NOMINATING COMMITTEE CHAIR</u>	N/A	N/A	N/A
<u>PARLIMENTARIAN</u>	JUDIE	MCCOMB	<a href="mailto:judypaint@uti.com">judypaint@uti.com</a>
<u>OC'TOLE'BERFEST</u>	LEHMAN	COLLEEN	<a href="mailto:irishki@sbcglobal.net">irishki@sbcglobal.net</a>
<u>PHILANTHROPIC</u>	SCHULZ	ROSE	<a href="mailto:schulzrose@aol.com">schulzrose@aol.com</a>
<u>PRESIDENT'S MESSAGE</u>	HABERSTROH	LORA	<a href="mailto:lmh4ipp@aol.com">lmh4ipp@aol.com</a>
<u>PUBLICITY</u>	MOLITOR	LINDA	<a href="mailto:lkmolitor@aol.com">lkmolitor@aol.com</a>
<u>RAFFLE CO-CHAIR</u>	MARGE	VARGAS	<a href="mailto:marge927@comcast.net">marge927@comcast.net</a>
<u>RAFFLE CO-CHAIR</u>	WESLEY	SUE	<a href="mailto:swesley1226@msn.com">swesley1226@msn.com</a>
<u>RELIEF CREW</u>	DREHER	SANDY	<a href="mailto:sandysceramic@msn.com">sandysceramic@msn.com</a>
<u>SDP LIAISON</u>	GIRTEN	TONI	<a href="mailto:ixgood@yahoo.com">ixgood@yahoo.com</a>
<u>SECRETARY</u>	D'SOUZA	JULIE	<a href="mailto:jdsouza4@gmail.com">jdsouza4@gmail.com</a>
<u>SUNSHINE/BIRTHDAYS</u>	RAPPELT	NORMA	<a href="mailto:nrappelt@sbcglobal.net">nrappelt@sbcglobal.net</a>
<u>TRAVELING DISPLAY</u>	GILKERSON	FRAN	<a href="mailto:fgilk@comcast.net">fgilk@comcast.net</a>
<u>TREASURER</u>	L'HEUREUX	BOBBIE	<a href="mailto:wblheur@comcast.net">wblheur@comcast.net</a>
<u>VICE PRESIDENT</u>	BOESCH	PAM	<a href="mailto:pamboesch@sbcglobal.net">pamboesch@sbcglobal.net</a>
<u>VINTAGE BOOKS CO-CHAIR</u>	PANOZZO	SANDY	<a href="mailto:spanozzo@comcast.net">spanozzo@comcast.net</a>
<u>VINTAGE BOOKS CO-CHAIR</u>	RIOS	MARGE	<a href="mailto:katlingarb@aol.com">katlingarb@aol.com</a>
<u>WAYS &amp; MEANS</u>	McCARTHY	PEGGY	<a href="mailto:plmpaints@hotmail.com">plmpaints@hotmail.com</a>

**Illinois Prairie Painters  
Proposed 2008 BUDGET**

	<b>2007 YTD</b>	<b>2007 Budget</b>	<b>2008 Proposed</b>
<b><u>INCOME</u></b>			
Education	8,745.00	4,000.00	6,000.00
Hospitality	5,010.50	5,000.00	5,000.00
Membership/Directory	2,420.00	2,000.00	2,000.00
Newsletter	27.50	0.00	0.00
Raffle	1,780.00	1,500.00	1,500.00
VP Programs	870.00	1,500.00	150.00
Ways & Means	2,889.95	1,000.00	2,000.00
Vintage Books	112.15	200.00	125.00
Library	27.60	0.00	0.00
Philanthropic	40.00	0.00	0.00
Octoberfest	2,326.03	0.00	2,000.00
Quilt	0.00	0.00	500.00
<b>TOTAL INCOME</b>	<b>24,248.73</b>	<b>15,200.00</b>	<b>19,275.00</b>
<b><u>EXPENSE</u></b>			
Administrative	2,327.57	1,700.00	2,360.00
Education	7,986.66	6,000.00	7,000.00
Library	258.43	160.00	100.00
Hospitality	4,485.38	5,000.00	5,000.00
Membership/Directory	243.91	350.00	300.00
Newsletter	983.38	1,500.00	1,500.00
Octoberfest	1,439.09	0.00	1,000.00
Publicity/Sunshine	242.17	150.00	150.00
Philanthropic	211.03	150.00	150.00
Raffle	185.65	40.00	40.00
VP/Programs	436.74	400.00	750.00
Ways & Means	848.70	300.00	600.00
Historian	16.03	50.00	25.00
Quilt	0.00	0.00	300.00
<b>TOTAL EXPENSE</b>	<b>19,664.74</b>	<b>15,800.00</b>	<b>19,275.00</b>

MARINA DOMNIKOVA

Honored Artist of Russian Federation, Member of Union of Painters of Russia  
Invites you to paint the following projects:

June 2, 2008 "IRISES", metal tray (9 x 11").

June 3-4, 2008 "FLOWERS AND BUTTERFLIES", (11x14")

June 11-13, 2008 "ROOSTER IN REPOSE", 14"



ART SEMINAR REGISTRATION FORM

The seminars will contain 1, 2, 3 days of classes for beginners, intermediate and/or advanced students. Classes are from 10.00AM - 5.00PM. The classes will be held at Banbury Fair (630)837-1727.

Price \$95.00 per day. Cost of supplies: \$25.00. Supplies: paints, metal tray, and the complete instruction package. Register before May 1 and get supplies free!

Name \_\_\_\_\_

Street \_\_\_\_\_ City \_\_\_\_\_ State \_\_\_\_\_

Zip \_\_\_\_\_ Phone \_\_\_\_\_ Email \_\_\_\_\_

Payment method:            by Check                            by Credit card (please add 3% to the cost)

Credit card: \_\_\_\_\_ exp: \_\_\_\_/\_\_\_\_

Signature \_\_\_\_\_

Register today and send your payment to: Alkota, 212 E. Scranton Ave. Lake Bluff, IL 60044 or fax the form to: (847)615-9138.

Don't forget to make your hotel reservation at Extended Stay America (630)893-4823 conveniently located at 1075 Lake St., Hanover Park, IL, 7- 9 minutes drive from the United Church of Christ, the place of the seminar.

In 1979 Marina graduated with Honors from the College of Miniature Painting of Fedoskino, famous for its lacquer miniatures. She has been decorated with the Bronze and Silver Medals by the Ministry of Culture and the Government of Russia for extraordinary achievements in decorative painting.

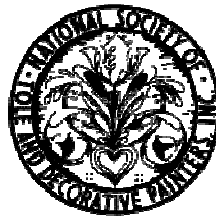
During her long and successful career, she took part in special exhibitions held annually in Russia as well as in other Republics of the former Soviet Union. She was invited to participate in the Decorative Symposiums and Painter's Conferences in Moscow, Minsk, Tallinn, Kiev and several others cities. Taught seminars in Italy, Vatican, Slovakia, France, Spain.

## **2008 SDP SCHOLARSHIP**

The application for the 2008 SDP Scholarship will be submitted to National the week of February 18, 2008. I am submitting an application for the chapter scholarship for IPP, if awarded, the funds will be used to purchase video equipment for use in our education programs.

The scholarships are awarded at the SDP annual conference in May.

Toni Girten  
SDP Liaison



## **SDP Happenings**

SDP has created a new addition to the regular 'Happenings', 'Conference Happenings' at <http://www.decorativepainters.org/conferencehappenings/> which will keep SDP members informed about the upcoming SDP annual conference in May 2008.

SDP has also created a link to 'Certification Happenings' at [http://www.decorativepainters.org/certificationhappenings/cth\\_02\\_08/](http://www.decorativepainters.org/certificationhappenings/cth_02_08/). This link will take you to site that 2007-2008 Certification Committee has developed for all SDP members who are pursuing Certification, those considering the program, those who have achieved Certification, and every painter who wishes to hone their painting skills.

Check out both pages on the SDP website.

Toni Girten  
SDP Liaison

# WINGS & WILDFLOWERS

April 5, 2008

Lyonsville Congregational United Church of Christ  
6871 Joliet Rd  
Indian Head Park, IL 60525  
708-246-1218

## SCHEDULE OF EVENTS

9:00 AM Doors Open – Hospitality Coffee/Rolls  
9:30 AM Seminar Sign-up – Lynne Deptula  
10:00 AM Business Meeting/Raffle  
11:30 AM Lunch  
1:00 PM Jayne Drynan Watercolor Paint-In

## MENU

Roast Pork & Gravy  
Roasted Rosemary Chicken  
Green Beans Almandine,  
Tossed Salad  
Mostaccioli with Meat Sauce  
Rolls & Butter

Coffee, Tea, Lemonade Desserts

**Reservation Deadline: March 28, 2008—Cost: \$14.00**

Send checks payable to Illinois Prairie Painters in the amount of \$14.00 to:

Darlene Durkovic  
939 Biltmore Ct  
Romeoville, IL 60446  
[dardee939@sbcglobal.net](mailto:dardee939@sbcglobal.net)

Member's Name \_\_\_\_\_ Dietary Restriction\_\_\_\_\_

Guest's Name\_\_\_\_\_ Dietary Restriction\_\_\_\_\_

Total enclosed \_\_\_\_\_

I will be staying for the Jayne Drynan watercolor paint-in  
Yes \_\_\_\_\_ No \_\_\_\_\_

Please email Gail Piazza [memom51256@hotmail.com](mailto:memom51256@hotmail.com)

Choosing a menu to please everybody is not an easy task; therefore, if there are any dietary needs or concerns, please do not hesitate to contact any hospitality committee member if a suitable plate is not offered. We will work with the facility (vendor) to accommodate you the best that we can, but in order to do that we need to be aware of your restrictions.

This is a reminder that hospitality will not open the doors to the IPP General Meeting for members until 9:00 AM.

Thank you,  
Hospitality



**"PHOTOS"**  
**Gretchen Cagle Seminar**  
**January 25-27, 2008**  
**Lyonsville Congregational United Church of Christ**





## "PHOTOS" February Philanthropic Paint-In



**ILLINOIS PRAIRIE PAINTERS MEMBERSHIP APPLICATION 2008**

Please complete the following application form and return it along with a check for \$20.00.

Make check payable to: Illinois Prairie Painters

If you have any questions please contact our Chapter Membership Representative,

BETTIE: [eslazyk@cs.com](mailto:eslazyk@cs.com).

NATIONAL MEMBERSHIP # \_\_\_\_\_ Name registered under if different \_\_\_\_\_

NAME: \_\_\_\_\_ (\_\_\_\_\_)

                    Last                      First                      Spouse

ADDRESS: \_\_\_\_\_ Apt. # \_\_\_\_\_

CITY: \_\_\_\_\_ STATE: \_\_\_\_\_ ZIP: \_\_\_\_\_

PHONE #: (\_\_\_\_) \_\_\_\_\_ BIRTHDATE: (Month/Day) \_\_\_\_\_

E-MAIL: \_\_\_\_\_

RECEIVE NEWSLETTER BY: Mail \_\_\_\_\_ or E-MAIL \_\_\_\_\_

NEW MEMBER \_\_\_\_\_ RENEWAL MEMBER \_\_\_\_\_

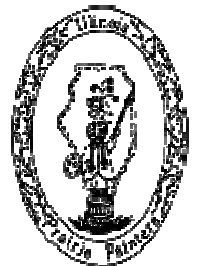
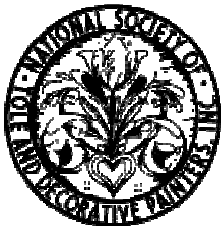
CATEGORY:

Student: \_\_\_ Teacher \_\_\_ Independent \_\_\_ Shop Owner \_\_\_ CDA \_\_\_ MDA \_\_\_

NAME & LOCATION OF SHOP OR STUDIO (where you teach) \_\_\_\_\_

Other talents and/or occupation, would you be interested in serving on a committee? \_\_\_\_\_

INDIVIDUAL MEMBERSHIP FEE \$20 \_\_\_\_\_ BUSINESS MEMBERSHIP \$20 \_\_\_\_\_ (Business member must also have an individual membership)



**You must be a member of the Society of Decorative Painters in order to be a member of any of their painting chapters. To obtain an application form you may either contact our Chapter Membership representative, Bettie (see information on above application form) or contact the SDP directly at their website: [www.decorativepainters.org](http://www.decorativepainters.org), call (316) 269-9300, ext. 105, or e-mail: [sony@decorativepainters.org](mailto:sony@decorativepainters.org).**

**To join the Society of Decorative Painters you must send a separate check directly to their office with your completed application form.**

